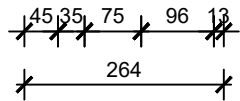
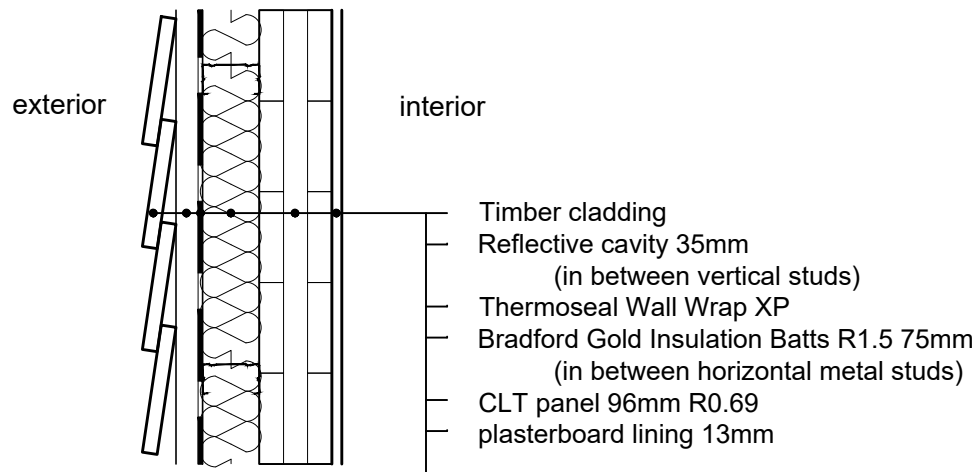


INSULATION DETAILS

TIMBER CLADDING SHOWN AS EXAMPLE ONLY

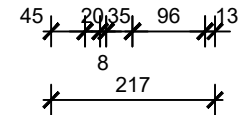
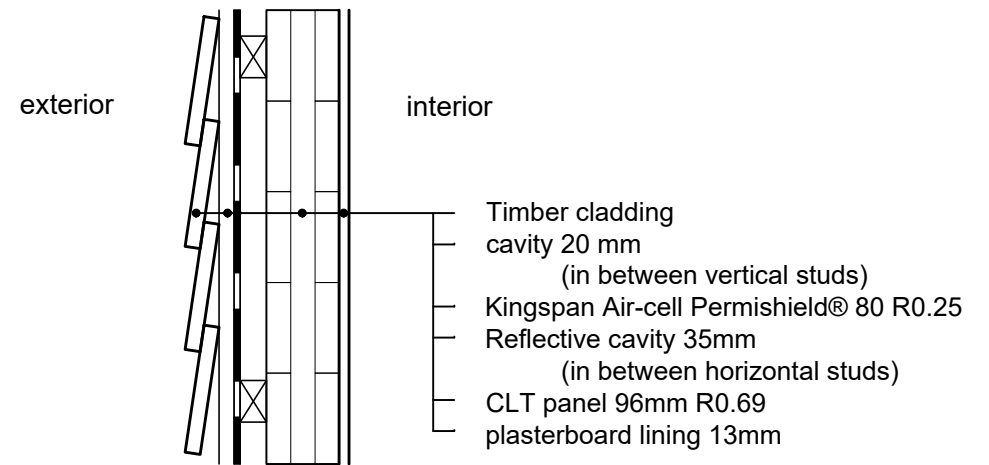
Option 1



CLT panel
 $t = 96\text{mm}$
 $\lambda = 0.13 \text{ Wm-2K-1}$

R-value
 $R = t / \lambda = 0.09 / 0.13 = 0.69 \text{ m}^2\text{K/W}$

Option 2



CLT panel
 $t = 96\text{mm}$
 $\lambda = 0.13 \text{ Wm-2K-1}$

R-value
 $R = t / \lambda = 0.09 / 0.13 = 0.69 \text{ m}^2\text{K/W}$